



# cool & COLLECTED

WITH AN EYE FOR VINTAGE AND A KNACK FOR DESIGN,  
A MELBOURNE COUPLE HAS TURNED A HERITAGE  
BUNGALOW INTO A STYLISH CONTEMPORARY HOME

STORY CHRISTINA LARMER STYLING JACQUI MOORE  
PHOTOGRAPHY ANNETTE O'BRIEN



**FRESH START** Nadia and her partner Enzo's ageing weatherboard bungalow in Melbourne was a less-than-perfect upgrade with plenty of potential. By doubling the footprint of the existing layout, the couple has created their perfect home. The newly added rear deck (opposite) is a tropical pocket in the middle of the city, with its Dulux Limed White walls, cane furniture (try Ebay) and timber finished in Cabot's Natural Decking Oil in Jarrah. The living room (below) is Nadia's favourite area as it includes treasured pieces, such as her grandmother's coffee table and a framed memento from her mother-in-law. "When she was young, in Italy, she sewed blue thread through this hessian sack and later brought it to Australia, so it's more than 50 years old," says Nadia (pictured). "When we bought the house I had it framed. It's perfect for the space." >



ADDITIONAL REPORTING JACQUI MOORE. (THIS PAGE) CERAMIC VASE, BUNGALOW TRADING CO. (OPPOSITE) CANE TABLE, RAINE & HUNBLE, CUSHION, FREEDOM, BLANKET, FENTON & FENTON

ADDITIONAL REPORTING: JACQUI MOORE, (THIS PAGE) CERAMIC WARE, BUNGALOW TRADING CO. (OPPOSITE) CANE TABLE, RAINE & HUMBLE, CUSHION, FREEDOM, BLANKET, FENTON & FENTON



#### KITCHEN/DINING

Nadia designed her striking kitchen around the 'Industrial 2500' table from Super Amart. "I didn't want an island bench, I wanted a big dining table where everybody congregates," she says. White replica Eames dining chairs are also from Super Amart, and a 'Jacana' pendant light (with glass removed to emphasise its industrial qualities) is from Schots Home Emporium. Engineered floorboards have a timeworn look; "With their gradual colour changes, it looks like they have been there for a while," explains Nadia.



**FLOORING**  
Royal Oak  
Floors 'Artisan'  
floorboards in Aged  
Carbonised, \$135/sqm,  
Befloored & More.

For most house hunters, finding the right property is usually the first step, while the furnishings remain an afterthought. Not so for Nadia and her partner, Enzo. With a growing collection of heirlooms and little room to show them off in their inner-Melbourne apartment, they were searching for the right space for their treasures. “When we went looking at properties I imagined where all the pieces I’d been collecting were going to go,” says Nadia, a visual merchandise manager. “I’ve always been interested in anything interiors related.”

So in 2013, when the couple came across a derelict 1940s California bungalow in Melbourne’s inner north, they couldn’t have been more delighted. Where others saw poky rooms and hard work, they saw history, charm, and a chance to show off their keepsakes. The ageing weatherboard was on a large block, giving them plenty of room to work with, while its heritage listing was a bonus. “We knew the streetscape would remain the same and no modern builds would replace the older-style homes in our street,” explains Nadia.

She and Enzo enlisted a draftsman, got their permits in order, then re-stumped and gutted the entire place with the help of family and friends. “The front of the house was heritage overlay so we couldn’t touch that,” says Nadia. “But the whole thing was pretty much ripped apart – walls, ceilings and floors.”

Then they hired a boutique builder and resurrected the home, adding new floors, fixtures and fittings while retaining character with ceiling roses, cornices and archways. “Both being Italian, we love the charm that comes from things that have been around for centuries,” explains Nadia. “I wanted to keep true to the heritage of the home, but make everything feel fresh and new.” The original stained-glass windows and doors were stripped back then repainted, while the small rooms evolved into a stunning open-plan living, dining and kitchen space, which was a finalist in *Home Beautiful’s* 50 Beautiful Rooms 2016 competition. Now the heart of the home, the kitchen/living area works exactly as it was designed. “I wanted a large space where everyone could sit around and feel comfortable,” says Nadia. “Friends and family are so important to us.”

Nadia’s creativity and great eye have helped develop the relaxed yet modern vibe of the home. “I don’t stick to one design aesthetic,” she says. “I like to mix things up, make things a little eclectic.” Ditto for the furnishings. “As a visual merchandiser I get bored if I don’t move things around,” she says. The couple’s beloved heirlooms are now on display throughout the house, but Nadia continues to trawl vintage shops for special pieces. “People say, ‘Oh where are you going to put that?’” she says. “But if you love it, you’ll find a spot for it.” Or, in Nadia and Enzo’s case, an entire home.

“IT’S IMPORTANT TO *stay true* TO YOUR OWN STYLE AND NOT TO GET CAUGHT UP IN FADS OR *current looks*, AS THEY CAN FADE” ~ NADIA



**KITCHEN** A monochromatic palette creates a simple yet sophisticated kitchen (above left), with white cabinetry by Northside Cabinets contrasting with a black Belling rangehood and oven from Harvey Norman. “I love the look of an old cooker,” says Nadia. “It brings me back to our Italian heritage.” Beaumont Tiles’ ‘Divine White Bevel Edge’ subway tiles with black grout form the splashback. Hand-crafted in spotted gum, a floating shelf offers space for Nadia to show her mother’s vintage glassware. A black bar with butcher’s hooks from Ikea, ‘Oslo’ pendants from Schots Home Emporium and Furnware Dorset’s ‘Woronora’ handles add further hints of black. **BUTLER’S PANTRY** The butler’s pantry (above right) was top of Nadia’s must-have list. “I wanted a very clean kitchen, no overhead cupboards and a butler’s pantry so I could tuck everything out of sight,” she says. She chose ‘Kalala Bai’ marble-like stone benchtops from YDL Stone, and kept costs scaled back with a ‘Franke’ sink from Bourne and an Ikea ‘Glittran’ tap. >

(OPPOSITE) JUG AND TEA TOWEL: SAFARI LIVING. PINK BOWLS AND CANISTERS: BUNGALOW TRADING CO. LINEN CURTAINS: TRY KEA OR BLINDS ONLINE



## WE LOVE...

### *a dash of dark*

When your home is bright and the palette neutral, choosing a dark hue for one feature wall is a solid option.

Nadia saw Dulux Oolong as the perfect choice to provide a striking backdrop for a feather headpiece picked up in South Africa. "In order for it to stand out I wanted the wall to be a little moody," she explains. The dark palette also draws out the colour of the stained-glass window, which was rescued from obscurity in the home's garden shed and restored. Dulux 'Wash & Wear Barrier Technology' in Oolong, \$85.90/4L, visit [dulux.com.au](http://dulux.com.au).



"PEOPLE ARE AFRAID OF *dark colours*, BUT I THINK THIS SPACE IS PERFECT FOR THIS AMOUNT OF *depth*. WHEN THE *fireplace* IS GOING IT'S REALLY COSY" ~ NADIA

VASE BUNGALOW TRADING CO



#### LIVING ROOM

With its harmonious blend of old treasures and new pieces, the living room is a much-loved space for entertaining or relaxing. Nadia's grandmother's mother-of-pearl coffee table takes centre stage. "My mum took it first and then I pinched it from her!" she says with a laugh. "I've always loved antiques, I can't help myself." The couple chose classic furnishings that won't compete with the dark feature wall, such as 'London' sofas from Focus On Furniture, a sisal rug from Freedom and a white Nick Scali 'Tasman' buffet. "I like to buy lots of new cushions and throws to complement the look and feel of each room," says Nadia, who added interest with a zebra-like Missoni 'Sigmund' throw from Safari Living, and cushions from Fenton & Fenton, Cakebread, Mint Home and Seneca. A leather magazine bag from Bungalow Trading Co adds yet another chic textural layer. >



#### MAIN BEDROOM

"It's nice to invest money in good-quality bed linen – it's my weakness," says Nadia, who dressed her 'Lamour' bed from Dare Gallery with Home Republic linen from Adairs, then added flair with decorative cushions. "It's a good idea to start with your favourite colour and build around it, but also to throw in a couple of unexpected prints and textures for interest," she says. A pale pink

velvet cushion by Citta Design and Elitis' 'Springs' patterned silk cushion in Lychee (far right) from Seneca add glamour, along with grey cushions from West Elm (now discontinued, try Etsy for similar). The bedside table is another timeworn treasure – it belonged to a friend, who was about to throw it away before Nadia rescued it, sanded it back, varnished it and added a vintage handle from Schots Home Emporium.

"I LOVE MIXING *two aesthetics* TOGETHER, SOMETHING *old* WITH SOMETHING THAT'S VERY MODERN ~ NADIA



  
**BED THROW**  
Missoni 'Sancho'  
#100' throw,  
\$700, Safari Living.



## INSIDE STORY

### NADIA & ENZO'S HOME

*Nadia, a visual merchandise manager; her partner, Enzo, a tradesman; and their dogs Oliver, the schnoodle, and Lulu the mini-labradoodle (all pictured).*

Nadia: "Don't get too stuck on one look. Shop around, mix old with new, and enjoy the journey - buy as you see it. There's always room for things. My mantra is, 'You can always put it somewhere.'"

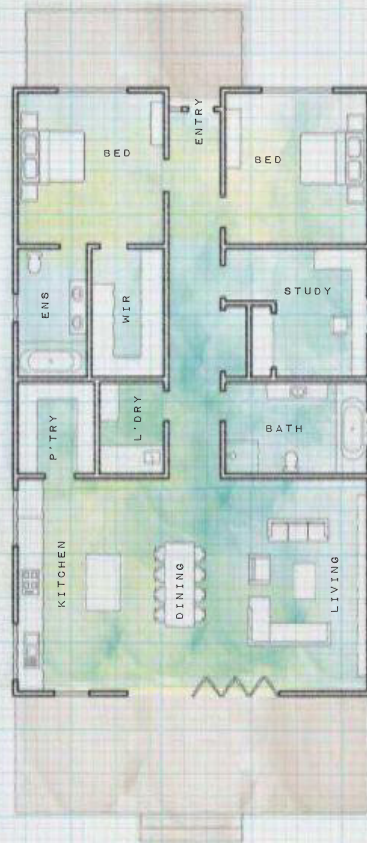
*"Our pets. We don't have children so our pets are our family. The dogs are generally good and don't destroy the furniture!"*



The main bathroom (above) shows how old world can work with new, and it all starts with the exotic floor tiles: Southern Cross Ceramics 'Artisan' tiles in Denim from Beaumont Tiles. "I loved them from the moment I saw them," says Nadia. "They are quite Moroccan inspired and blue is my favourite colour, so I built my

look around them." Matt white 300mm x 150mm ceramic wall tiles from Beaumont Tiles provide a classic backdrop, while an Early Settler claw-foot bath adds to the heritage look. Nadia and Enzo warmed the room with a laminated timber cabinet by Northside Cabinets and a timber nib wall to act as a display shelf. "To hold drinks, plants and candles," adds Nadia.

GROUND FLOOR



Drafting  
CA Building Design,  
(03) 9466 2622.

**Builder**  
Mannfield Group  
0404 852 456.



## CASE STUDY:

ADDRESS: 15 MASHOOBRA STREET, COBURG

BUILDER: OWNER BUILDER  
20sq CALIFORNIAN BUNGALOW

## BACKGROUND:

The clients came to us with the property and had a simple philosophy. How can we make use of the existing space while providing a small extension to the rear of the property without going overboard with structural changes. We investigated the property and came up with a functional layout that didn't require a massive extension of the property.

Whilst the façade was painted and freshened up, it couldn't be changed due to a Heritage Overlay. Being a lovely Californian bungalow, who would want to change it anyway!

This property also features in the "Australia Home Beautiful" magazine with the editors impressed with the usage of space within the existing "front" half of the home.

This home represents timeless material choices externally and internally to create a warm home that has been one of our favourite smaller extension/renovation design projects.



The floor plan illustrates a proposed extension and renovation of a house. The existing structure is shown with dashed lines, while the new extension is highlighted in yellow. Key features and annotations include:

- SHED 1:** A yellow-shaded shed area on the left side of the plan.
- Kitchen:** A yellow-shaded room with a 'Masonry chimney' and 'joinery'. Dimensions include 900x750 and 900x600. A note indicates to 'Remove Masonry chimney/flu structure to existing Kitchen. ensure any footings/slab structures are totally removed for new extension to take place'.
- Bath:** A yellow-shaded room with a '2.06m high opening' and a '1500x1000 wall opening'.
- Living:** A room with a '2.06m high opening' and a '2.06m high opening'.
- Lounge:** A room with a 'masonry chimney' and a 'Close opening and create two new openings for doors to lead to proposed ensuite/ WIR'.
- Bedroom 2:** A room with a 'F.F.L 144.225' and a '1300x1800' dimension.
- Bedroom 3:** A room with a '1400x950' dimension.
- Porch:** A small outdoor area on the right side of the plan.
- Annotations:**
  - 'Remove wall windows in highlighted sections' points to the highlighted extension walls.
  - 'Remove "flat roof" above rear highlighted section of dwelling' points to the roofline of the extension.
  - 'Remove wall internal walls and external walls of highlighted "rear" section of dwelling' points to the rear wall of the extension.
  - 'Existing pitched roof sits on this wall - Engineers to provide suitable lintels over openings as per new extension plans - Existing roof structure to remain - New truss roof to sit on top of existing structure to truss manufacturers design & comps' points to the roofline of the extension.

[illegible]

[www.creativearch.com.au](http://www.creativearch.com.au)



# creative arch

imagine - design - build

## KITCHEN



555 High Street, Preston VIC 3072

Ph: (03) 9466 2622

[www.creativearch.com.au](http://www.creativearch.com.au)



# creative arch

imagine - design - build

## WALK IN PANTRY & LAUNDRY



555 High Street, Preston VIC 3072

Ph: (03) 9466 2622

[www.creativearch.com.au](http://www.creativearch.com.au)

# creative arch

imagine - design - build

## BATHROOM & ENSUITE



555 High Street, Preston VIC 3072

Ph: (03) 9466 2622

[www.creativearch.com.au](http://www.creativearch.com.au)



# creative arch

imagine - design - build

## LIVING ROOM



555 High Street, Preston VIC 3072

Ph: (03) 9466 2622

[www.creativearch.com.au](http://www.creativearch.com.au)